
How to configure your browser to access the Internet

How to configure your browser to access the Internet

To access the Internet, please configure your browser to auto-detect the proxy server

This document explains how to:

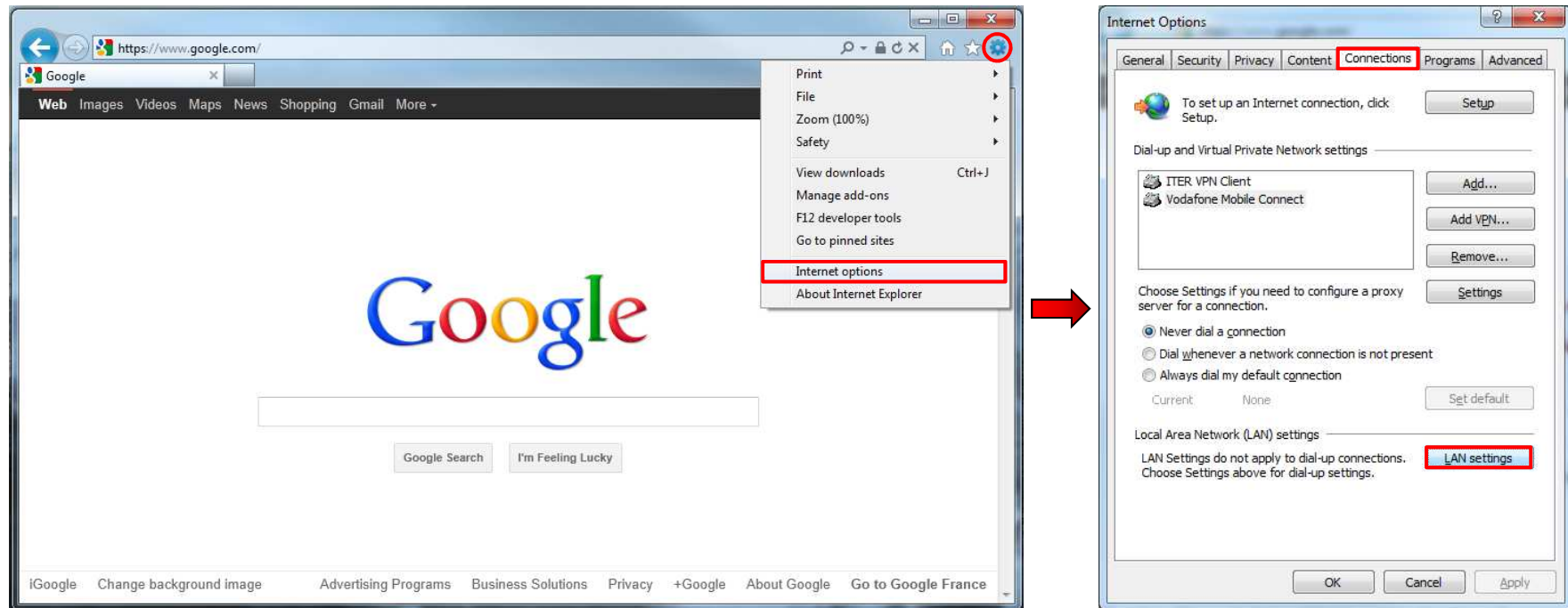
- Set Internet Explorer to auto-detect the proxy
- Set Google Chrome to auto-detect the proxy
- Set Mozilla Firefox to auto-detect the proxy

How to configure your browser to access the Internet

Internet Explorer

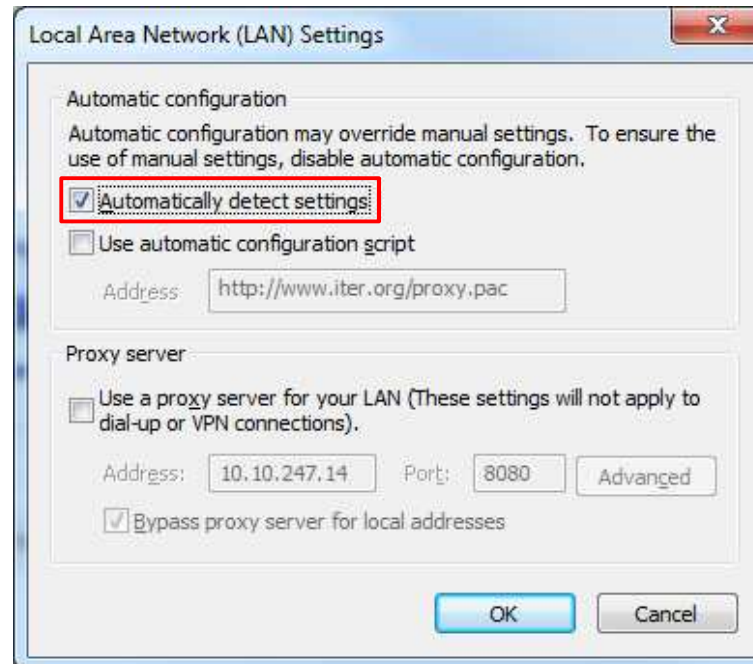
How to configure your browser to access the Internet

- Open **Internet Explorer**, click on the **Tools** icon, and **Internet Options**.
- Select **Connections** and **LAN Settings**.



How to configure your browser to access the Internet

- Select “*Automatically detect settings*”, and click **OK**.

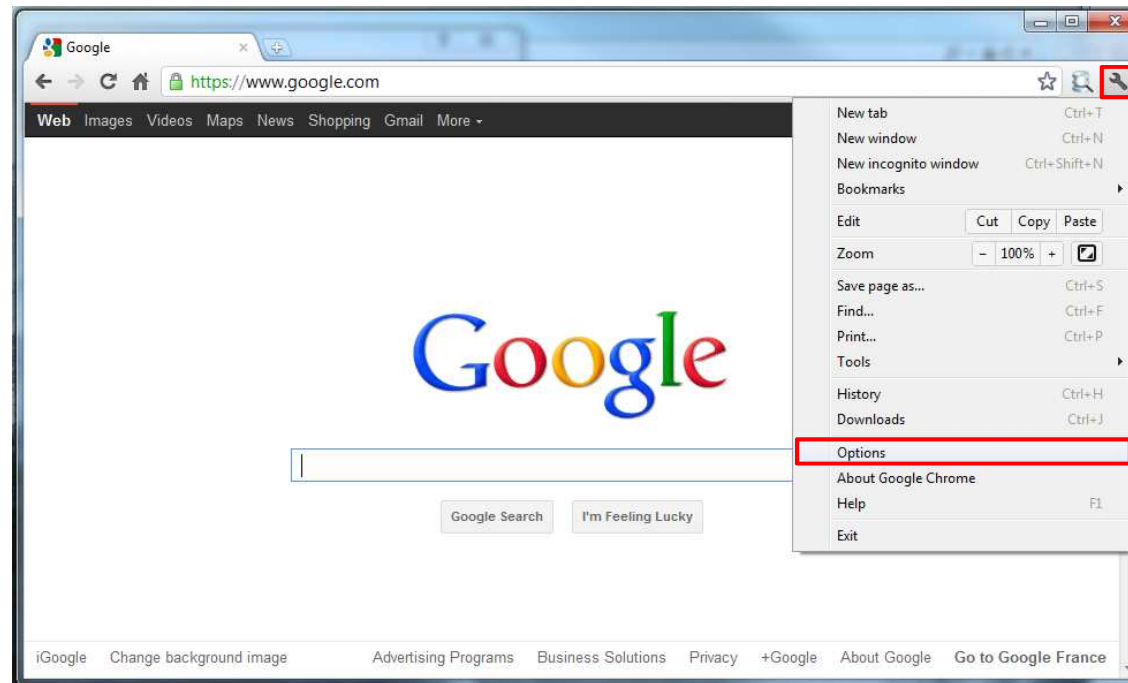


How to configure your browser to access the Internet

Google Chrome

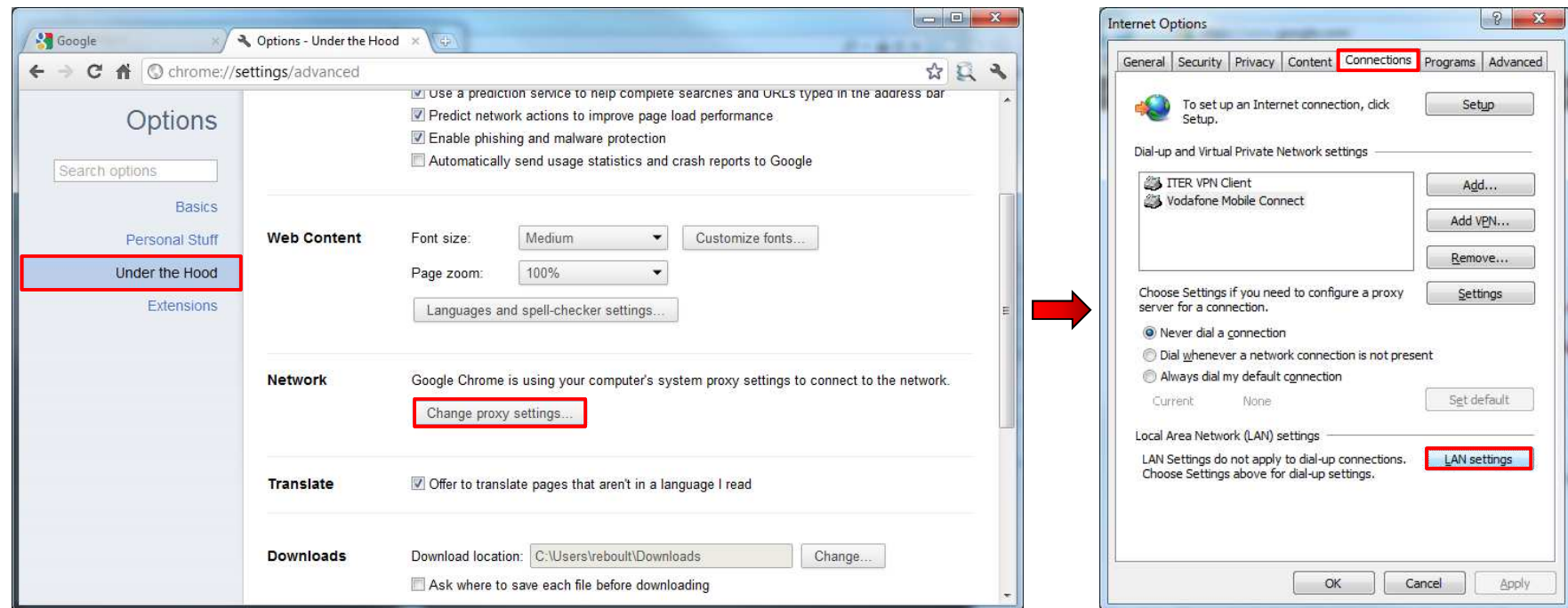
How to configure your browser to access the Internet

- Open **Google Chrome**, click on the **Settings** icon, and **Options**.



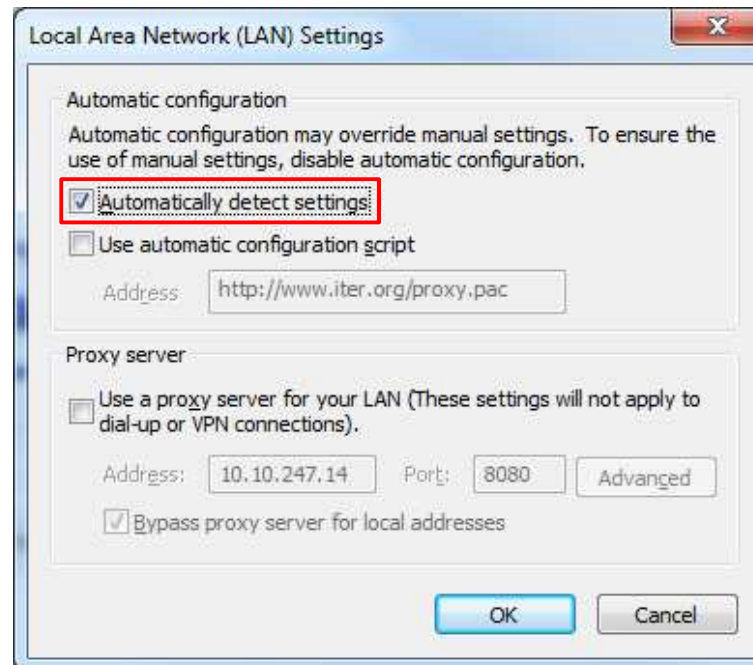
How to configure your browser to access the Internet

- Select ***Under the hood***, then ***Change proxy settings...***
- Select ***Connections*** and ***LAN Settings***.



How to configure your browser to access the Internet

- Select “*Automatically detect settings*”, and click **OK**.

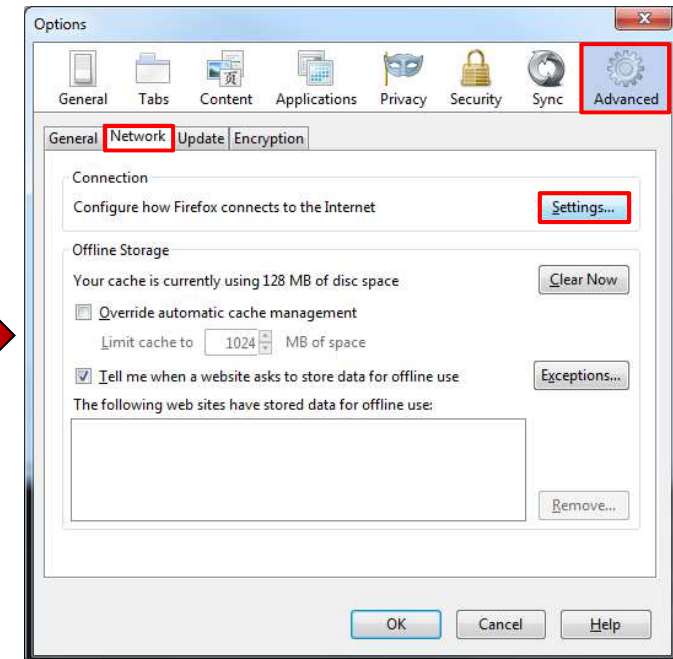
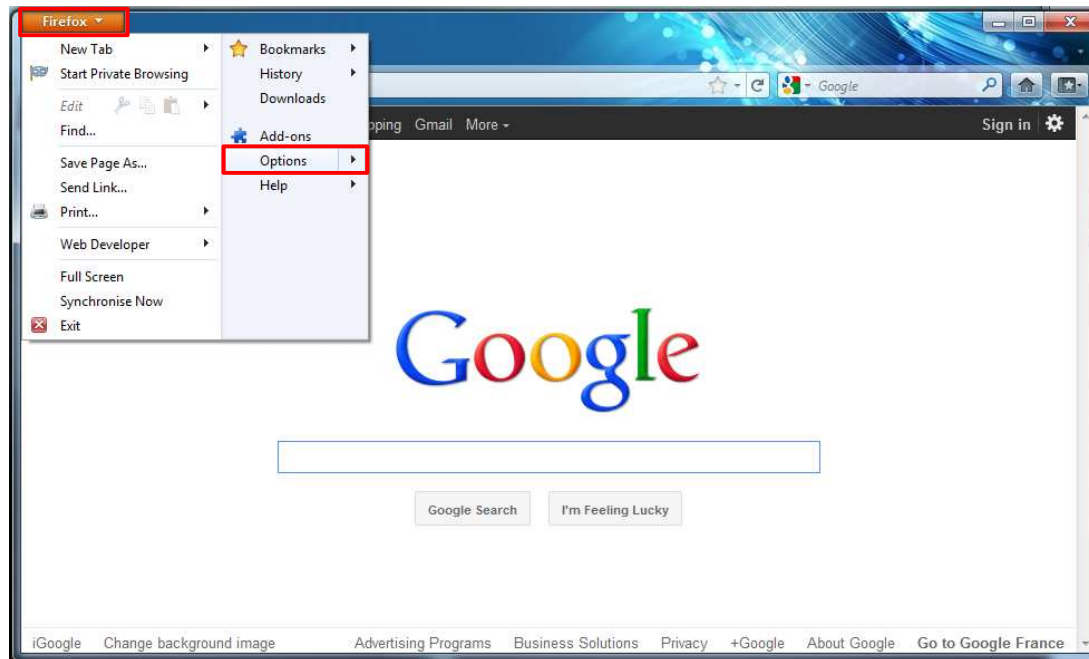


How to configure your browser to access the Internet

Mozilla Firefox

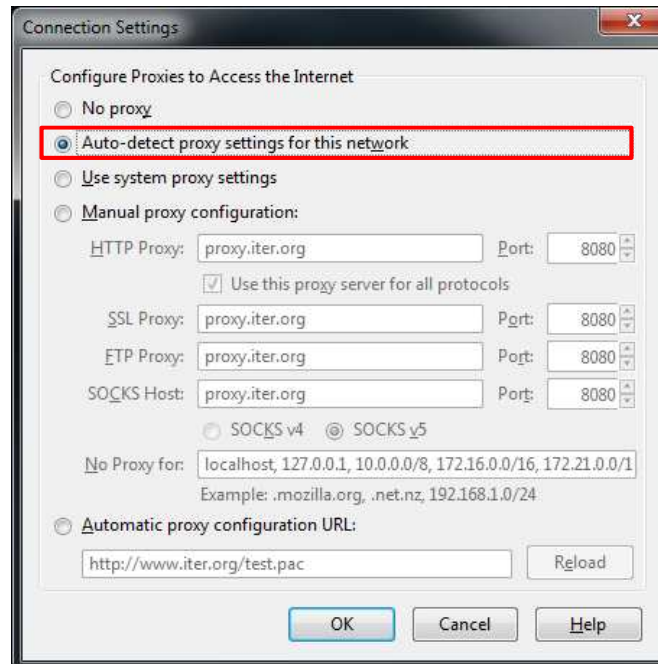
How to configure your browser to access the Internet

- Open **Mozilla Firefox**, go to the **Firefox** menu, and click on **Options**.
- Select **Advanced**, **Network**, and **Settings**.



How to configure your browser to access the Internet

- Select ***“Auto-detect proxy settings for this network”***, and click **OK**.



How to configure your browser to access the Internet

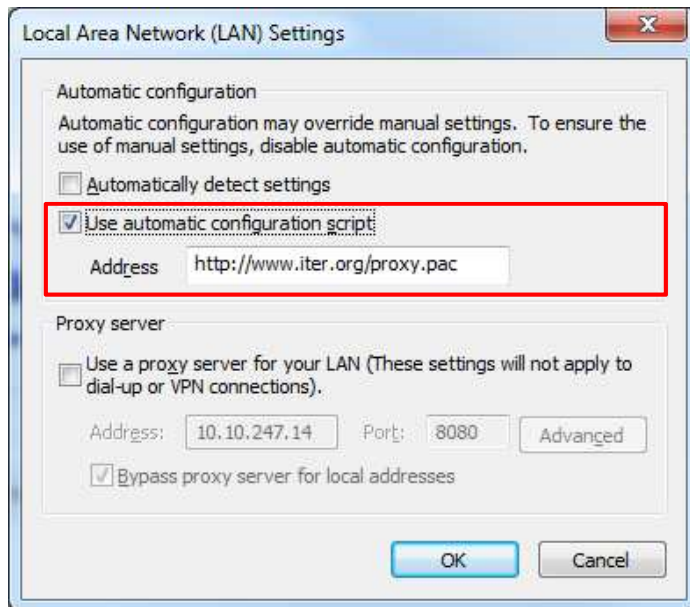
In case of problems

How to configure your browser to access the Internet

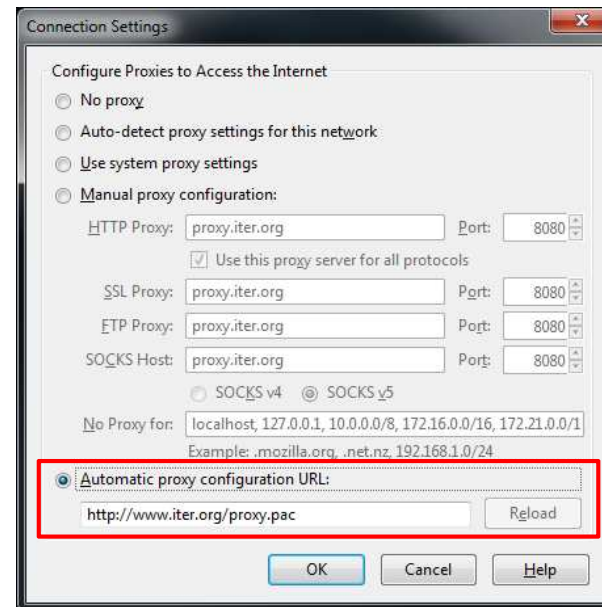
- If the proxy auto-detection doesn't work as expected, please specify the proxy script manually:

<http://www.iter.org/proxy.pac>

- Internet Explorer / Chrome:



- Mozilla Firefox:



How to configure your browser to access the Internet

- If you use an application where you have to explicitly specify a proxy server, please configure it that way:

Address: **10.10.240.144**

Port: **8080**

- Internet Explorer / Chrome:



- Mozilla Firefox:

